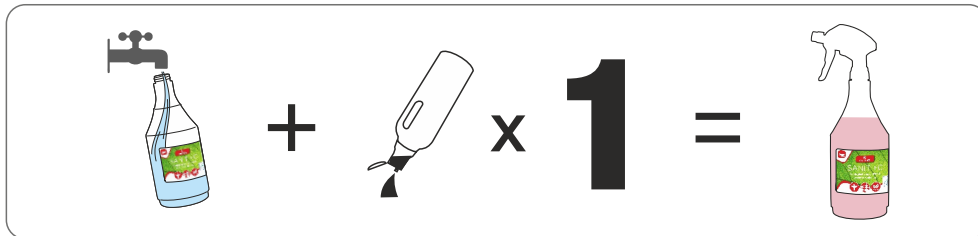


# SANIT +C

Ecological concentrated washroom cleaner

Removes soiling and water scale from water washable hard surfaces, including stainless steel, porcelain, ceramic, glass and plastic.

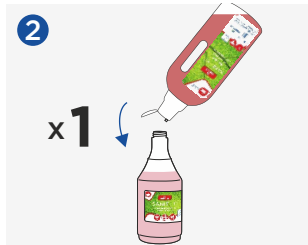
## DILUTION RATE (General Cleaning)



## METHOD OF USE



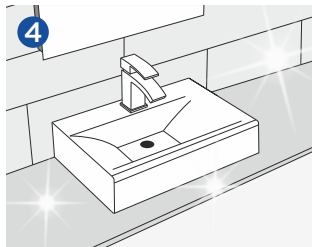
1 Fill an empty trigger bottle with clean water.



2 Add 1 shot (20ml) of GREEN'R Sanit +C.



3 Spray diluted GREEN'r Sanit +C onto the area to be cleaned and work into the surface with a cloth.



4 Wipe away with a clean cloth. Leave the surface to air dry.

NB. DO NOT USE on acid sensitive surfaces such as marble.

## DOSAGE

APPLICATION	DILUTION
LIGHT CLEANING	9ml (1:66)
GENERAL CLEANING	20ml (1:30)
HEAVY CLEANING	30ml (1:20)
BUCKET FILL	40ml (1:125)

## PRODUCT INFO



Pack Size: 1L, 5L  
 Product Code: 507  
 Odour: Sweet  
 Colour: Red  
 pH (undiluted): 2.1  
 Shelf life: 2 years



For Health & Safety information, please scan the QR code provided.

**FEEL OUR PASSION**

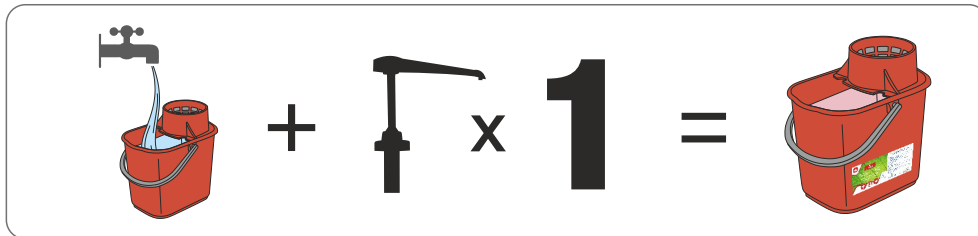
Christeyns Professional Hygiene UK Ltd | Clover House | Whaley Bridge | SK23 7DQ  
 T +44 (0) 1663 733 114 | W www.cloverchemicals.com

# SANIT +C

Ecological concentrated washroom cleaner

Removes soiling and water scale from water washable hard surfaces, including stainless steel, porcelain, ceramic, glass and plastic.

## DILUTION RATE (Heavy Cleaning)



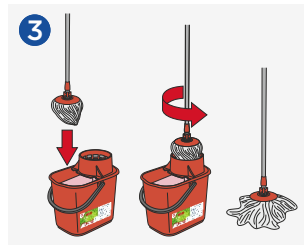
## METHOD OF USE



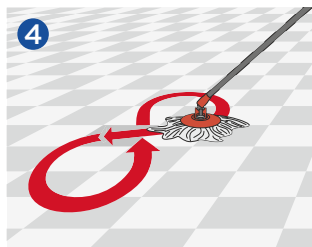
1 Fill an empty trigger bottle with clean water.



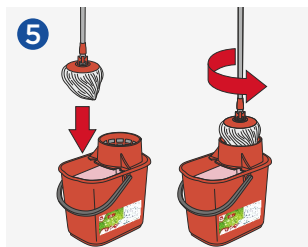
2 Dispense 1 pump (30ml) of GREEN'R Sanit +C into a bucket.



3 Immerse the clean mop head into the bucket of GREEN'R Sanit +C solution and wring out the mop thoroughly.



4 Apply the mop to the floor and wipe in a figure of 8 motion, working the mop side to side.



5 Clean the dirty mop head in the bucket and repeat the previous steps until the floor is clean.



6 Allow to air dry for a streak-free finish.

NB. DO NOT USE on acid sensitive surfaces such as marble.

## DOSAGE

APPLICATION	DILUTION
LIGHT CLEANING	9ml (1:66)
GENERAL CLEANING	20ml (1:30)
HEAVY CLEANING	30ml (1:20)
BUCKET FILL	40ml (1:125)

## PRODUCT INFO




Pack Size: 1L, 5L  
 Product Code: 507  
 Odour: Sweet  
 Colour: Red  
 pH (undiluted): 2.1  
 Shelf life: 2 years



For Health & Safety information, please scan the QR code provided.

**FEEL OUR PASSION**

Christeyns Professional Hygiene UK Ltd | Clover House | Whaley Bridge | SK23 7DQ  
 T +44 (0) 1663 733 114 | W www.cloverchemicals.com



**CHRISTEYNS**  
 PROFESSIONAL HYGIENE



WASHROOM  
CLEANING

  
**GREEN'R**

# SANIT +C

## WASHROOM CLEANER



- ECOLOGICAL WASHROOM CLEANER
- CONCENTRATED - ECONOMICAL IN USE
- CLEANS HARD SURFACES
- VEGAN APPROVED
- EU ECOLABEL: IE/020/002

### PRODUCT DESCRIPTION

Removes soiling and water scale from water washable hard surfaces\*, including stainless steel, porcelain, ceramic, glass and plastic. This is a concentrated product, apply sparingly and evenly. Proper dosage saves costs and minimises environmental impact.

- Reduced impact on aquatic life
- Reduced use of hazardous substances
- Not tested on animals
- Phosphate free
- Suitable for use in septic tanks
- Rapidly biodegradable
- Clear user instructions
- Reduced packaging waste

### DILUTION RATES

**Light Cleaning** - Dilute 9mls (1:66) of GREEN'R Sanit +C in a 600ml trigger spray with cold water.

**General Cleaning** - Dilute 20mls (1:30) of GREEN'R Sanit +C in a 600ml trigger spray with cold water.

**Heavy Dirt** - Dilute 30mls (1:20) of GREEN'R Sanit +C in a 600ml trigger spray with cold water.

**Bucket Fill** - Dilute 40mls (1:125) of GREEN'R Sanit +C in a 5 Litre bucket with cold water.

### INSTRUCTIONS FOR USE

**For the best ecological and economical usage.**

Apply a dilution of GREEN'R Sanit +C evenly onto the surface using a trigger spray. With a clean cloth, sponge, pad or mop, work over the surface to remove the soiling. Use a bucket of clean cold water to rinse out the cloth, sponge, pad or mop. Rinse with cold water if necessary.

**\*NB. DO NOT USE ON ACID SENSITIVE SURFACES EG. MARBLE.**

### ADDITIONAL INFORMATION

Product code: 507  
pH Level: 2-4

## **STORAGE**

---

Use above 5°C. Store preferably above 0°C.

## **PACKAGING**

---

8 x 1 Litre

2 x 5 Litre

## **NON WARRANTY**

---

This information is based on our current knowledge and is intended to describe the product for the purposes of health, safety and environmental requirements only. It should not therefore be construed as guaranteeing any specific property of the product.